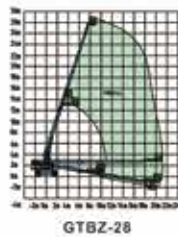
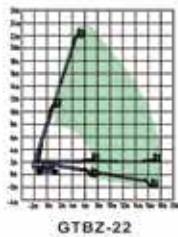
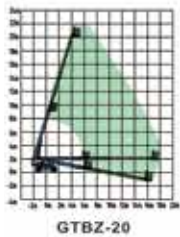


# TELESCOPIC BOOM LIFTS

Technical Data	GTBZ-20	GTBZ-22	GTBZ-26	GTBZ-28	GTBZ-30	GTBZ-32	GTBZ-36	GTBZ-38	GTBZ-42
<b>Dimensions</b>	Metric(US)	Metric(US)	Metric(US)	Metric(US)	Metric(US)	Metric(US)	Metric(US)	Metric(US)	Metric
Working height maximum	22.5m (73 ft 9.6 in)	24.12m (79 ft 1.6 in)	27.8m (91 ft 2.4 in)	29.8m (97 ft 8.8 in)	32.4m (106 ft 3.2 in)	34m (111 ft 6.2 in)	38.52m (126 ft 4.2 in)	40.2m (131 ft 10.3 in)	43.8m (143 ft 7.9 in)
Platform height maximum	20.5m (67 ft 2.9 in)	22.12m (72 ft 6.8 in)	25.8m (84 ft 7.6 in)	27.8m (91 ft 2.1 in)	30.4m (99 ft 8.5 in)	32m (104 ft 11.5 in)	36.52m (119 ft 9.4 in)	38.2m (125 ft 3.6 in)	41.8m (137 ft 1.2 in)
Horizontal reach maximum	17.2m (56 ft 4.6 in)	18.8m (61 ft 7.9 in)	20.7m (67 ft 10.8 in)	22m (72 ft 2 in)	22.61m (74 ft 1.9 in)	24.45m (80 ft 2.4 in)	21.2m (69 ft 6.4 in)	22.6m (74 ft 1.6 in)	23.98m (78 ft 7.8 in)
Platform Size L*W	2.44 m x 0.91 m (8ft x 2 ft 11.7in)	2.44 m x 0.91 m (8ft x 2 ft 11.7in)	2.44 m x 0.91 m (8ft x 2 ft 11.7in)	2.44 m x 0.91 m (8ft x 2 ft 11.7in)	2.44 m x 0.91 m (8ft x 2 ft 11.7in)	2.44 m x 0.91 m (8ft x 2 ft 11.7in)	2.44 m x 0.91 m (8ft x 2 ft 11.7in)	2.44 m x 0.91 m (8ft x 2 ft 11.7in)	2.44 m x 0.91 m (8ft x 2 ft 11.7in)
A Length stowed	9.6m (31 ft 5.9 in)	11.1m (36 ft 4.9 in)	11.54m (37 ft 9 in)	13.06m (42 ft 10 in)	13m (42 ft 7.6 in)	14.02m (45 ft 11.8 in)	12.8m (41 ft 11.8 in)	14.07m (46 ft 1.8 in)	13.36m (43 ft 9.8 in)
B Width - stowed (standard tire)	2.49m (8 ft 2 in)	2.49m (8 ft 2 in)	2.49m (8 ft 2 in)	2.49m (8 ft 2 in)	2.49m (8 ft 2 in)	2.49m (8 ft 2 in)	2.49m (8 ft 2 in)	2.49m (8 ft 2 in)	2.49m (8 ft 2 in)
C Height - stowed	2.8m (9 ft 2.1 in)	2.81m (9 ft 2.6 in)	2.88m (9 ft 4 in)	2.8m (9 ft 2.1 in)	3.08m (10 ft 1.2 in)	3.08m (10 ft 1.2 in)	3.08m (10 ft 1.2 in)	3.08m (10 ft 1.2 in)	3.1m (10 ft 2 in)
D Wheel base	3.5m (8 ft 2.4 in)	3.5m (8 ft 2.4 in)	3m (9 ft 10 in)	3m (9 ft 10 in)	3.66m (12 ft)	3.66m (12 ft)	3.66m (12 ft)	3.66m (12 ft)	3.83m (12 ft 6.72 in)
E Ground clearance - center	0.45m (1 ft 5.8 in)	0.45m (1 ft 5.8 in)	0.43m (1 ft 4.9 in)	0.43m (1 ft 4.9 in)	0.43m (1 ft 4.8 in)	0.43m (1 ft 4.9 in)	0.43m (1 ft 4.9 in)	0.43m (1 ft 4.9 in)	0.43m (1 ft 4.9 in)
<b>Productivity</b>									
Lift capacity	250 kg - 480 kg (550 lbs - 1058 lbs)	250kg (550 lbs)	250 kg - 480 kg (550 lbs - 1058 lbs)	250 kg (550 lbs)	250 kg (550 lbs)	250 kg (550 lbs)	230kg - 450kg (506 lbs - 1056 lbs)	230kg (506 lbs)	230 kg (506 lbs)
Max platform occupancy (indoor/outdoor)	2	2	2	2	2	2	2	2	2
Turntable rotation	360° continuous	360° continuous	360° continuous	360° continuous	360° continuous	360° continuous	360° continuous	360° continuous	360° continuous
Platform rotation	160°	160°	160°	160°	160°	160°	160°	160°	160°
Drive speed - stowed	6.3 km/h (3.9 mph)	6.3 km/h (3.9 mph)	5.2 km/h (3.2 mph)	5.2 km/h (3.2 mph)	4.5 km/h (2.7 mph)	4.5 km/h (2.7 mph)	4.5 km/h (2.7 mph)	4.5 km/h (2.7 mph)	4.4 km/h (2.7 mph)
Drive speed - raised	1.1 km/h (0.6 mph)	1.1 km/h (0.6 mph)	1.1 km/h (0.6 mph)	1.1 km/h (0.6 mph)	1.1 km/h (0.6 mph)	1.1 km/h (0.6 mph)	1.1 km/h (0.6 mph)	1.1 km/h (0.6 mph)	1.1 km/h (0.6 mph)
Gradeability - stowed	30%	30%	30%	30%	40%	40%	40%	40%	40%
Turning radius - inside	2.66 m (8 ft 8.6 in)	2.66 m (8 ft 8.6 in)	2.44 m (8 ft 2 in)	2.62 m (8 ft 7 in)	2.62 m (8 ft 7 in)	2.62 m (8 ft 7 in)	2.62 m (8 ft 7 in)	2.62 m (8 ft 7 in)	3.6 m (11 ft 9.7 in)
Turning radius - outside	5 m (16 ft 4.8 in)	5m (16 ft 4.8 in)	5.8 m (19 ft 2.3 in)	5.98 m (19 ft 7.3 in)	5.25 m (17 ft 2.6 in)	5.25 m (17 ft 2.6 in)	5.25 m (17 ft 2.6 in)	5.25 m (17 ft 2.6 in)	6.5 m (21 ft 3.8 in)
Turning Tail-swing	1.3 m (4 ft 3.1 in)	1.3 m (4 ft 3.1 in)	1.46 m (4 ft 9.4 in)	1.46 m (4 ft 9.4 in)	1.80 m (5 ft 10 in)	1.8 m (5 ft 10 in)	1.8 m (5 ft 10 in)	1.8 m (5 ft 10 in)	1.3 m (4 ft 10 in)
Max. Allowable slope	3°	3°	3°	3°	3°	3°	3°	3°	3°
Tyres	355/55D625	355/55D625	385/55-24	385/55-24	445/65-24	445/65-24	445/65-24	445/65-24	445/65-24
<b>Power</b>									
Power source	Cummins/Perkins	Cummins/Perkins	Cummins/Perkins	Cummins/Perkins	Cummins/Perkins	Cummins/Perkins	Cummins/Perkins	Cummins/Perkins	Cummins/Perkins
Control voltage	12 V /24V	12 V /24V	12 V /24V	12 V /24V	12 V /24V	12 V /24V	12 V /24V	12 V /24V	12 V /24V
Drive & Steering type	4WD+2WS	4WD+2WS	4WD+2WS	4WD+2WS	4WD+4WS	4WD+4WS	4WD+4WS	4WD+4WS	4WD+4WS
power	60 kw (75 hpl)	60 kw (75 hpl)	60 kw (75 hpl)	60 kw (75 hpl)	60 kw (75 hpl)	60 kw (75 hpl)	60 kw (75 hpl)	60 kw (75 hpl)	60 kw (75 hpl)
Fuel tank capacity	150 L (40 gal)	150 L (40 gal)	150 L (40 gal)	150 L (40 gal)	150 L (40 gal)	150 L (40 gal)	150 L (40 gal)	150 L (40 gal)	150 L (40 gal)
<b>Sound Level</b>									
Sound pressure level (ground workstation)	< 80 dBA	< 80 dBA	< 80 dBA	< 80 dBA	< 80 dBA	< 80 dBA	< 80 dBA	< 80 dBA	< 80 dBA
<b>Weight</b>									
CE Base Standard	11850 kg (26204 lbs)	12022 kg (26504 lbs)	16635 kg (36453 lbs)	16671 kg (36753 lbs)	18890 kg (41645 lbs)	18760 kg (41272 lbs)	20000 kg (44000 lbs)	20100 kg (44300 lbs)	22100 kg (48620 lbs)



## Standard Configuration

- Self - leveling platform
- Hydraulic platform rotation
- Can Bus Technology
- Tilt sensor
- Safety electric pump
- Horn
- Hour meter
- Overload sensor with alarm
- 360° continuous turntable rotation
- Proportional controls
- Onboard Diagnostic System
- Hydraulic oil cooler
- AC power on the platform

## Options

- Platform work lights
- European IV Emission Engine

