



**WELDING SERVICE  
PROFILE**

# INDEX



<u>A PROUD MEMBER OF BUKHATIR GROUP</u>	03
<u>OUR DIVISIONS / OUR LEADERS</u>	05
<u>WELDING SERVICE</u>	06
<u>OUR SERVICES</u>	07
<u>OUR PARTNERS</u>	10
<u>OUR MAJOR CUSTOMERS</u>	11

## A PROUD MEMBER OF BUKHATIR GROUP

---

German Gulf Enterprises is proud to be part of Bukhatir Group—one of the UAE's largest and most diversified business conglomerates, with strong foundations in construction, education, IT, real estate, sports, and retail.

Operating across North America, North Africa, and West and South Asia, Bukhatir Group drives global progress through innovation and strategic partnerships.

With a vibrant workforce representing over 70 nationalities, the Group fosters a collaborative environment focused on growth, well-being, and continuous development.

As a member of this forward-thinking network, German Gulf Enterprises shares the vision of building a sustainable future, empowered by talent and guided by excellence.

Together, we remain committed to shaping impactful solutions and contributing to a legacy of success across industries.

# OUR DIVISIONS



**SERVICE WORKSHOP  
/ WELDING SERVICE DIVISION**



**PARTS & INDUSTRIAL SUPPLIES DIVISION**



**CONSTRUCTION EQUIPMENT DIVISION**



**WELDING & CUTTING DIVISION**



**HYDRAULIC SALES & SERVICE DIVISION**



**RENTAL DIVISION**

# OUR LEADERS



**AYMAN AHMED**  
CEO  
INDUSTRIES, TRADING & SERVICES  
BUKHATIR GROUP



**FATEN MOHAMED**  
Deputy General Manager  
Parts & Industrial Supplies



**AHMAD SWAID**  
Deputy General Manager  
Construction Equipment



**DEEPU UNNITHAN**  
Deputy General Manager  
Hydraulic



**IBRAHIM EMIRA**  
Deputy General Manager  
Service workshop



**ANIL KUMAR**  
Deputy General Manager  
Welding & Cutting



**SANTOSH GUPTA**  
Divisional Manager  
Rental



**RAGHAV PRABHU**  
Head of Finance



**WALDEMAR LIS**  
Divisional Manager  
Hydraulic Service

# WELDING SERVICE



German Gulf Enterprises (GGE) is a name synonymous with excellence in service and aftersales support. With a rich legacy of supporting industries across the UAE, our service workshop / Welding Service Division specializes in delivering comprehensive maintenance, repair, and fabrication services.

Our unwavering commitment to quality, safety, and reliability has established us as the trusted partner for leading global brands such as HYPER THERM, MESSER, KEM PPI, INROTECH, DURMA, KEMPER, and many more.

At German Gulf, we take pride in providing exceptional service through our specialized Service Workshop / Welding Service Division. Designed to meet the diverse needs of industries, our state-of-the-art facility offers end-to-end fabrication, repair, and maintenance solutions.

With a team of highly skilled engineers and technicians, each with over 15 years of experience, we ensure your equipment remains operational and dependable. From routine servicing to complex machinery overhauls, we are equipped to manage every requirement efficiently.

## OUR SERVICES

---

- Plate Cutting Job Shop By Fiber Laser CNC Machine
- Waterjet CNC Cutting Service
- Welding Machines Calibration of All Makes
- Hypertherm-Authorized Service Workshop
- After-Sales Support of Manual & CNC Machines GGE Welding & Cutting
- Retrofit Of CNC Plate Cutting Machines
- Genuine Spare Parts Supply

# WELDING SERVICE



## PLATE CUTTING JOB SHOP BY FIBER LASER CNC MACHINE

We offer plate-cutting services using state-of-the-art, fiber laser CNC machines. Our cutting capabilities ensure precise and efficient cutting of various materials to meet your specific requirements.

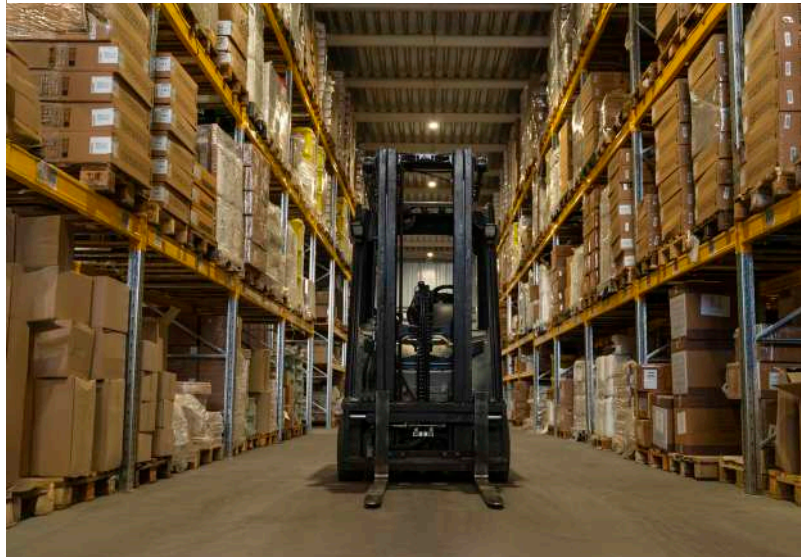
## WATERJET CNC CUTTING SERVICE

With our advanced waterjet CNC cutting technology, we can provide accurate and clean cuts on a wide range of materials, allowing for intricate designs and complex shapes.



## GENUINE SPARE PARTS SUPPLY

We understand the importance of using genuine spare parts for optimal performance and longevity of your equipment. We offer a wide range of genuine spare parts to ensure that your machines are equipped with high-quality components.



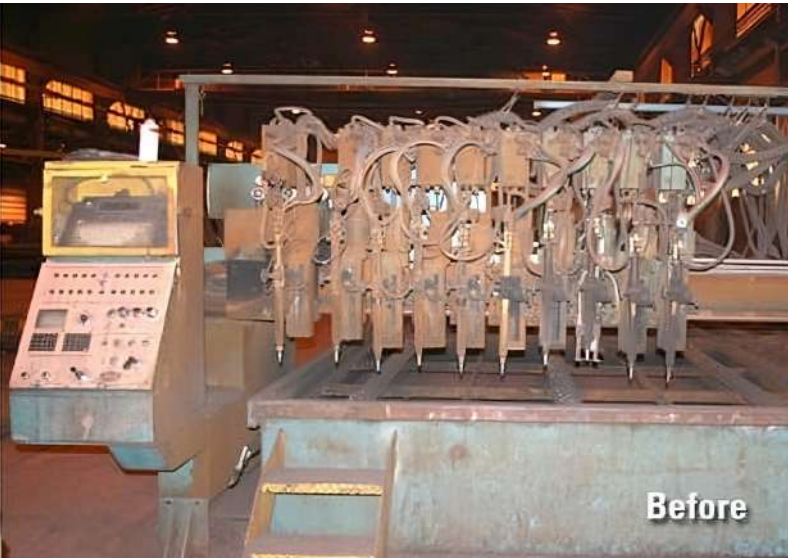
## WELDING MACHINES CALIBRATION OF ALL MAKES

We specialize in the calibration of welding machines from all makes and models. Our experienced technicians ensure that your welding equipment is properly calibrated for optimal performance and accuracy.



## HYPERTHERM-AUTHORIZED SERVICE WORKSHOP

As an authorized Hypertherm service workshop, We provide certified repair and maintenance for their cutting systems. Our trained technicians ensure reliable support for all Hypertherm equipment.



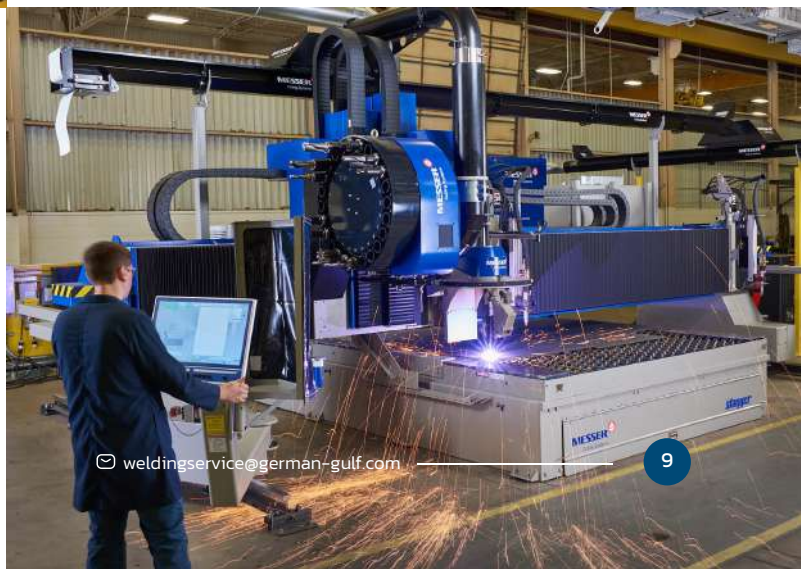
## RETROFIT OF CNC PLATE CUTTING MACHINES

Upgrade outdated or underperforming CNC machines with our retrofit services.

We modernize control systems, replace key components, and boost productivity, accuracy, & reliability—extending machine life without the cost of full replacement.

## AFTER-SALES SUPPORT FOR MANUAL & CNC MACHINES GGE WELDING AND CUTTING

We offer complete after-sales support for manual & CNC welding & cutting machines. Our expert team is ready to assist with technical issues, troubleshooting, & training ensuring smooth & efficient operation.



# OUR PARTNERS

---



[www.hypertherm.com](http://www.hypertherm.com)

World leader in hand and mechanized plasma cutting. We offer a vast range of quality and reliable metal cutting solutions.



[www.kemppi.com/en-US](http://www.kemppi.com/en-US)

Established in 1949, Kemppi has emerged as the design leader in the arc welding industry, revolutionizing welding practices and enhancing quality and productivity. Choose Kemppi as your trusted partner in arc welding, and experience the cutting-edge technology, unrivaled expertise, and unmatched quality that have made them an established brand in the market.

## DURMA

---

[www.durmazlar.com.tr/en](http://www.durmazlar.com.tr/en)

Durmazlar, which is the leader of the sector in Turkey and carries on business in the field of the production of sheet metal working machinery, is a global manufacturer with its plants, having large production sections equipped with the latest technology



<https://www.kotec21.com/en/>

KOTEC specializes in fabricating industrial machinery for the structural steel industry, delivering reliable performance and tailored solutions. With a focus on innovation and customer satisfaction, KOTEC continues to support the steel fabrication sector through advanced technology and precision engineering.



<https://in.messer-cutting.com>

Messer Cutting Systems is a global supplier of cutting solutions for the metal-working industry. With our reliable cutting technologies, superior service, and intelligent software solutions, we are setting standards worldwide. A leading brand in thermal cutting industry.



[www.inrotech.com](http://www.inrotech.com)

Inrotech is known as the pioneer of Mobile Welding Robots, catering to industries such as shipbuilding, offshore, wind, hydro, and heavy industries. Experience their mobile welding robot solutions, ideal for construction sites, welding large structures, and seamlessly integrating robots into workshop workflows.

## KEMPER

---

[www.kemper.eu/en](http://www.kemper.eu/en)

Since 1977, KEMPER has been a pioneer in welding smoke extraction technology, delivering innovative, high-quality solutions for metalworking plants. With over 40 years of expertise, KEMPER ensures compliance with occupational safety and environmental standards, exceeding legal requirements.

## OUR MAJOR CUSTOMERS

---





المشاريع الألمانية الخليجية  
German Gulf Enterprises



**SHARJAH  
HEAD OFFICE**

P.O. Box 5937 | Sharjah | UAE  
F: +971 6 531 4128



**DUBAI  
BRANCH (DIP)**

P.O. Box 42725 | Dubai | UAE  
F: +971 4 883 4078



**ABU DHABI  
BRANCH**

P.O.Box 9394 | Abu Dhabi | UAE  
F: +971 2 551 0403